

DRIVE OPEN/DRIVE CLOSE ACTUATOR FOR DAMPERS UP TO APPROX. 0.8 M²

Application

The AM-DM4-IC is intended for the operation of air control dampers in HVAC systems. It is suitable for use on balanced blade dampers up to approximately 0.8 m²

Mode of operation

3 position control by InnoCAB cable system.

NOTES

High functional reliability

The actuator needs no limit switches and halts automatically at the rotational limits.

Rapid connection

InnoCAB RJ12 connections reduce installation time.

⚠ Manual operation

Manual rotation IS NOT allowed - DAMAGE MAY OCCUR.

⚠ Angle of rotation

Mechanical stops MUST NOT be used to limit the angle of rotation - DAMAGE MAY OCCUR.

⚠ Parallel Connection

Parallel connection of multiple actuators IS NOT allowed - DAMAGE MAY OCCUR

WIRING DETAILS

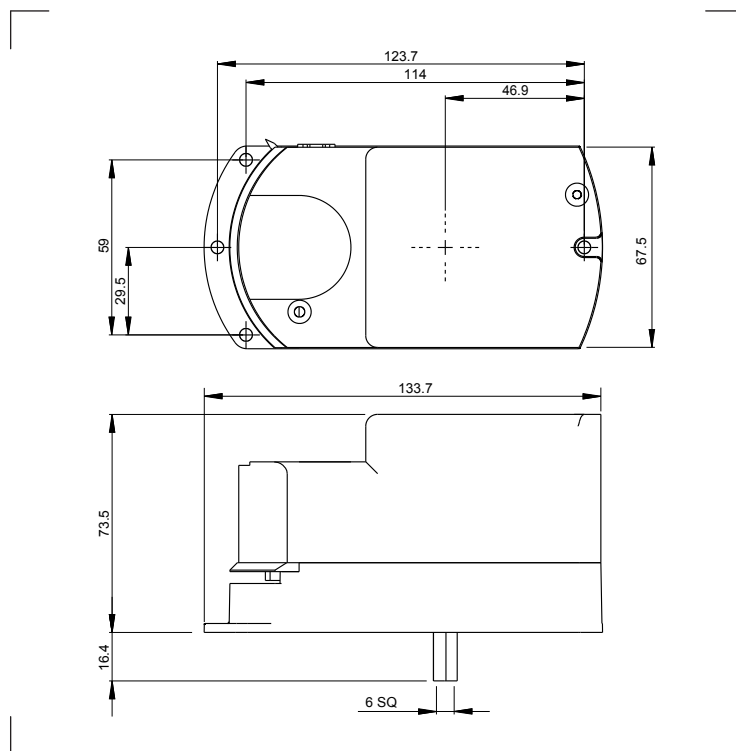
Actuator InnoCAB socket - pin allocation



24 V AC Drive Open - Pins 1 and 2

24 V AC Neutral - Pins 3 and 4

24 V AC Drive Closed - Pins 5 and 6



TECHNICAL DATA	AM-DM4-IC
Nominal voltage	24 V AC ± 20%, 50/60 Hz
Power consumption	4.6 VA (maximum)
Connection	1 x RJ12 socket
Direction of rotation (Open)	Clockwise
Torque	min. 4 Nm (at rated voltage)
Angle of rotation	max. 95°
Link to damper	6 mm square male shaft
Rotation run time	17 seconds
Position indication	mechanical pointer (opposite to direction of rotation)
Ambient temperature range	-30...+50 °C
Non-operating temperature	-40...+80 °C
Maintenance	maintenance free
Weight	520 g